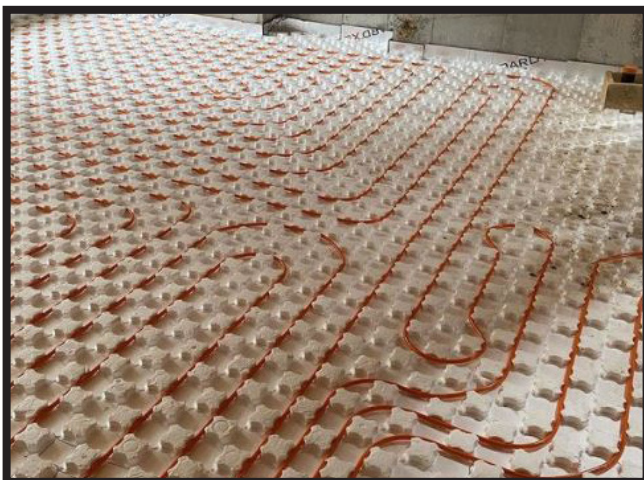


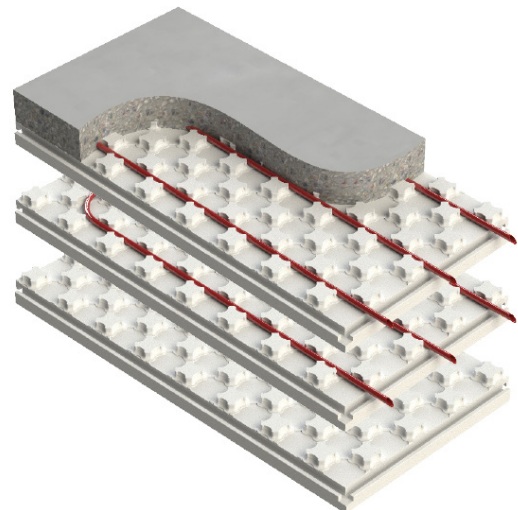


HEAT-SHEET®



Installing Radiant Floor Tubing has never been so quick and easy!

- Compact (2' x 4') and easy to handle, Heat-Sheet® Panels securely interlock together.
- Tough preformed nodules resist job site breakage and form a multi-directional tubing channel grid.
- Tubing easily “walks into place” (in half the time or better!).
- And, tubing stays in place (without ties, clips or staples in most cases).



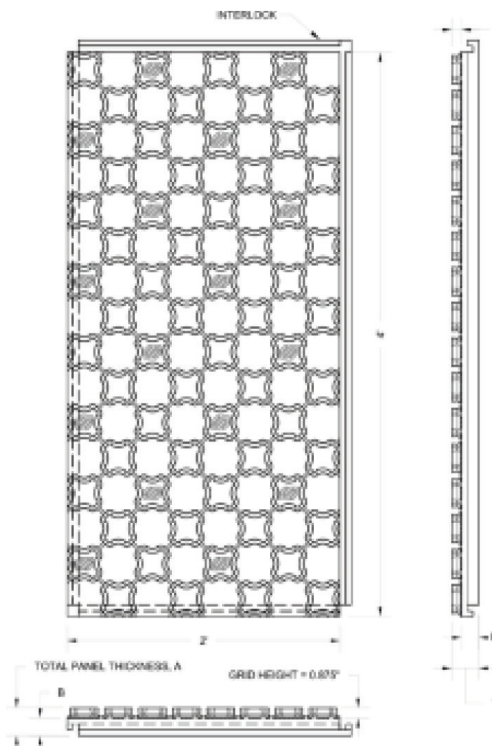
HEAT-SHEET.COM

TECHNICAL INFORMATION

Specifications

Heat-Sheet® Radiant Floor Panels are made with expanded polystyrene (EPS) a tough, high-density, closed cell foam insulation that is engineered to a minimum compression strength of 25 psi to support the weight of cast-in-place concrete. (Higher compression strengths are available upon request.) Heat-Sheet® Panels come in a range of thicknesses from 1/2" (R-4) to 3-1/2" (R-16.1). (*Nominal panel thickness)

Heat-Sheet®'s tubing channel system provides proper multi-directional placement of 1/2" or 5/8" I.D. tubing with 3" on-center points.



Applications

Heat-Sheet® Radiant Floor Panels can be used in a wide variety of under-concrete hydronic radiant floor applications, including:

- + Slab-On-Grade Applications
- + Sandwich Slab Applications
- + Snow-Melt Applications
- + Retrofit & Overlay Applications

Estimating

1. Measure the length and width to determine the size of the area in which you want to install Heat-Sheet® Panels.
2. The panels are 8 sq. ft. each. Divide the area by 8 to get the number of panels you require.
3. Heat-Sheet® Panels come bundled in varying quantities as shown in the Size & Packaging Chart. When ordering your panels, round up to the nearest whole bundle.

Installation Steps

LAYING HEAT-SHEET® RADIANT FLOOR PANELS

1. Ensure the ground is reasonably level before beginning installation.
2. A vapor barrier may be required by your local building code. When installing a vapor barrier, ensure it is in place before you begin laying the Heat-Sheet® panels.
3. Remove the interlock from two sides of the starting panel to avoid an air gap. It is easiest to remove the interlock you can see when looking at the back of the panel. Starting in a corner, place the cut edges tight against the wall.
4. For the next panel, cut the interlock on the 4' length only. Place trimmed panels so that they interlock along the 2' dimension.
5. Continue placing panels until you come to a wall. You will likely need to cut the final panel in this row to fit.
6. Use the leftover segments to start the next rows, and be sure to maintain the 3" spacing pattern. The idea is to have a staggered (running bond) layout rather than rows or columns. This helps keep the panels bound together and reduces waste.

ONCE HEAT-SHEET® PANELS ARE INSTALLED

1. Heat-Sheet® Radiant Floor Panels are designed with a 3" grid for easy tube spacing. Please consult an HVAC designer to determine the required separation points.
2. Install the tubing by simply walking it into the panels.
3. Ensure the tubing is fully seated when turning a corner before you begin the next run. You may need to use a plastic staple on the turns to keep the pipe in place.
4. Wire mesh and rebar can be laid directly on top of the panels, if required.

SCREED VOLUME RATES

To the top of the Heat-Sheet® nodules: 0.043 ft³/ft².
For each additional inch of slab: 0.083 ft³/ft².

Size & Packaging Chart

Product Description	Nominal Panel Thickness (B)	Total Panel Thickness (A)	Average R-Value	Panels/Bundle ⁴	Sq.Ft./Bundle
HS-R4 ¹	0.5"	1-3/8"	4	20	160
HS-R6 ¹	1.0"	1-7/8"	6	14	112
HS-R8 ¹	1.5"	2-3/8"	8	10	80
HS-R10 ^{2,3}	2.0"	2-7/8"	10	10	80
HS-R12 ^{2,3}	2.5"	3-3/8"	12	6	48
HS-R14 ^{2,3}	3.0"	3-7/8"	14	6	48
HS-R16.1 ^{2,3}	3.5"	4-3/8"	16	6	48

¹ These panels do not interlock.

² Additional vapor barrier not required when using Type 3 EPS in accordance with the National Building Code of Canada.

³ Additional vapor retarder not required when using Type IX EPS in accordance with the International Building Code.

⁴ Panels per bundle may vary. Contact your local Heat-Sheet® representative to confirm. CCMC EVALUATION LISTING 14007-L

The various panel thicknesses are regionally available. Please confirm product availability in your region.

HEAT-SHEET.COM

FOR MORE INFORMATION:

Email us at info@logixbrands.com or Call your local Heat-Sheet® manufacturer below.



Beaver Plastics Ltd.
Head Office: 11581 - 272 Street
Acheson, AB Canada T7X 6E9
#215-44393 Simpson Rd.
Chilliwack, BC Canada V2R 5M3
888.453.5961
BeaverPlastics.com

Form Solutions
840 Division St.
Cobourg, ON
Canada K9A 5V2
888.706.7709
FormSolutions.ca

Form Systems
P.O. Box 16923
Wichita, KS
US 67216
888.838.5038
FormSystemsInc.com

AMC Foam Technologies
35 Headingley Rd.
Headingley, MB
Canada R4H 0A8
877.789.7622
AMCFoam.com

REV. 02242023

